

VIZNET

Industrial Portal

THE TECHNOLOGY



VIZNET INDUSTRIAL PORTAL (IP) is a new generation Portal, built on the latest Microsoft .NET technology that meets the age-old business challenge of creating a single user interface across the entire organisation.

The primary purpose of VIZNET is to provide a secure, web enabled, data visualisation application that allows the user to effectively access, display and manipulate data from any number of dissimilar sources.

These datasources include those from real-time systems, from the transactional world as well as live data from web-services. So the plant-floor finally meets the top-floor.

Combine real-time graphics, MES and ERP information with operational feedback support by way of reporting and key performance indicators and you will reap the rewards of higher efficiency and greater profits. And all of this from a single easy to manage software environment.

VIZNET IP leverages the benefits of Microsoft .NET and addresses a lot of the problems found in traditional Windows client-server applications.

The VIZNET IP is an extensible framework designed to allow users to meet the most complex challenges, yet is intuitive and easy to use.

Some of the features of the product include:

VIZNET DESIGNER

- * Windows Forms based design environment
- * Supports standard Windows Controls and ActiveX Controls
- * Security applicable to all graphic elements
- * Drag and drop configuration
- * Scalable Vector Graphics
- * Supports layers and levels on graphic forms
- * Choice of C# or VB.NET scripting
- * Multiple language support on graphic forms
- * Support for remote design over the Internet

VIZNET SERVER

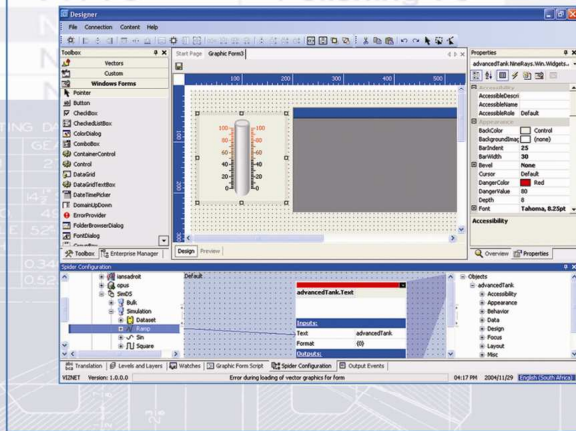
- * Centralised user profiling
- * Security applicable to all data elements
- * Centralised storage and management of all the graphic forms
- * Choice of C# or VB.NET scripting
- * Auto-application deployment (designer and operator)
- * Access to multiple datasources (Adroit, OPC, OLEDB, Web Services)

VIZNET OPERATOR

- * Smart-Client Technology
- * Support for operation over the Internet and other low bandwidth networks



THE VIZNET DESIGNER



Those users with some programming experience will recognise the design environment as being very similar to Visual Studio, but configuration is largely achieved using simple drag and drop techniques.

COLLABORATIVE AUTOMATION FRAMEWORK FOR THE INTELLIGENT ENTERPRISE

We have collaborated with some best-of-breed suppliers in the area of reporting, business intelligence and manufacturing execution systems (MES) to deliver a complete suite of products that will allow you to design and build a system that most suits your needs, at the best possible price.



ADROIT VERSION 6

The Adroit Agent Server remains the primary I/O server for the VIZNET IP. Adroit's legendary ease of use and stability combined with the comprehensive and powerful set of agents allow you to build a system that supports your own control needs.

MANUFACTURING EXECUTION SYSTEMS

Adroit Technologies have partnered with leading Manufacturing Execution Company, Cimnet, Inc to offer the FACTELLIGENCE MES software in modular format for the VIZNET IP framework.

FACTELLIGENCE is a comprehensive MES software product designed to meet the unique needs of manufacturing companies and addresses the process, discrete, repetitive, make-to-order and make-to-stock modes in one system.



Benefit from a wide range of functionality including utilisation, OEE, lot traceability, genealogy, material tracking, consumption, work-in-progress and labour performance.

MANUFACTURING MODULES INCLUDE:

Production Manager, Tracking Manager, Certification Manager, Step Manager, Supply Chain Connector, DNC Manager, Forms Manager, Product Definition, Labor Manager, Utilisation Manager, SPC, Factory Connector, Data Logger and Audit Trail.

REPORTING SOLUTIONS

We have developed a datasource for the OPUS reporting product. This allows you to contain and execute your operational and performance reports in VIZNET. Giving real-time performance management to your whole organisation.

